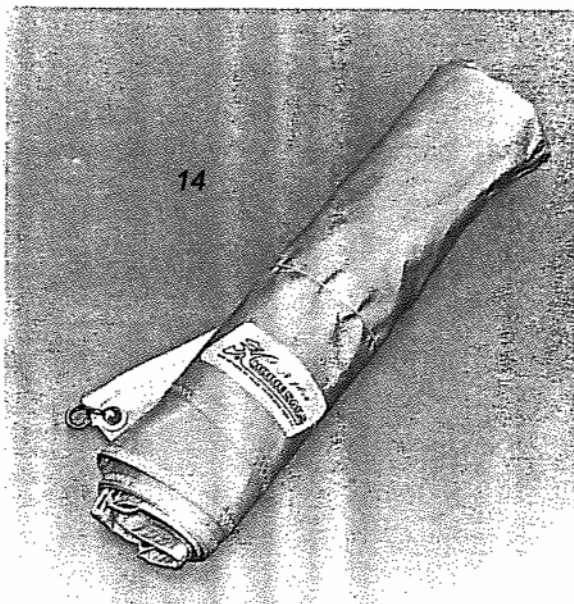
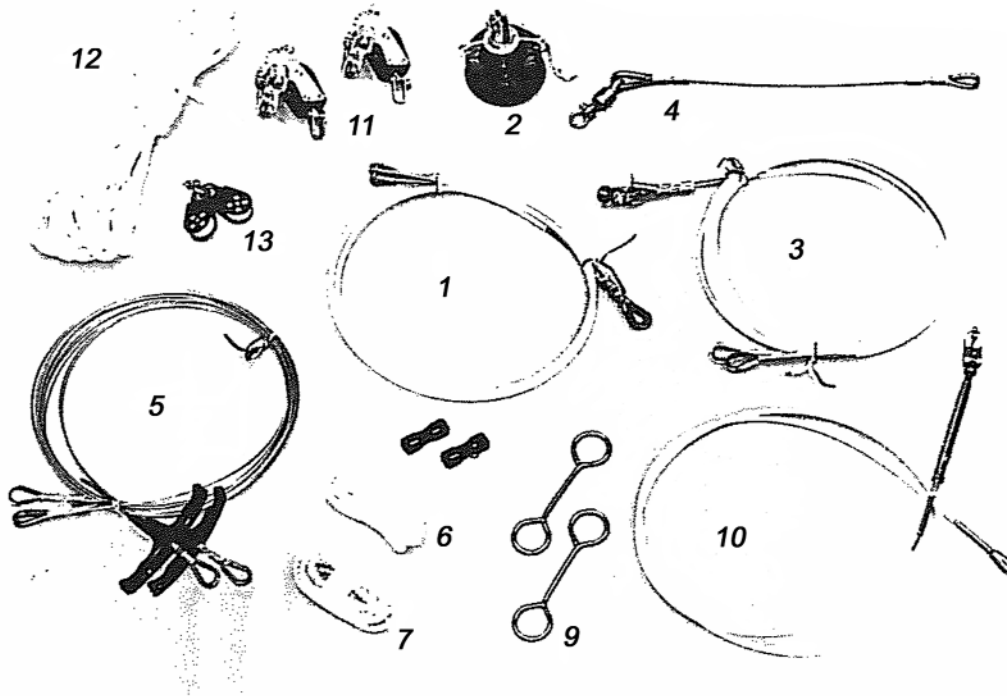


HOBIE 14

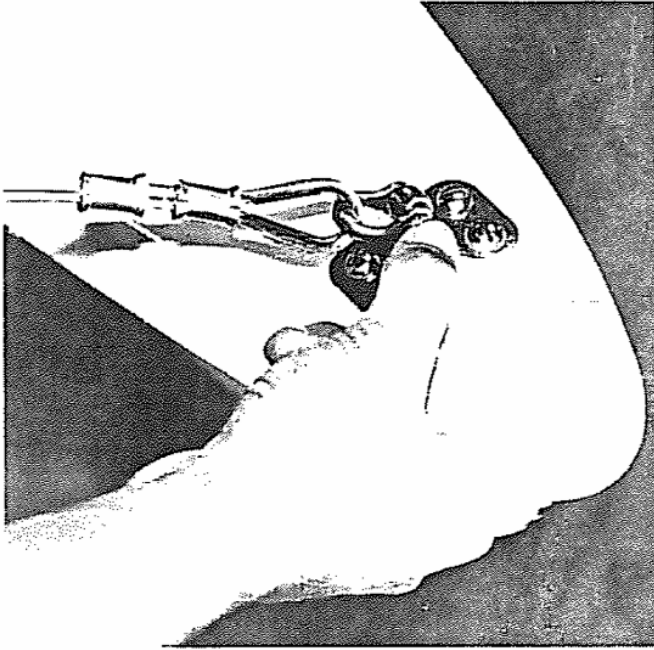
Turbo™



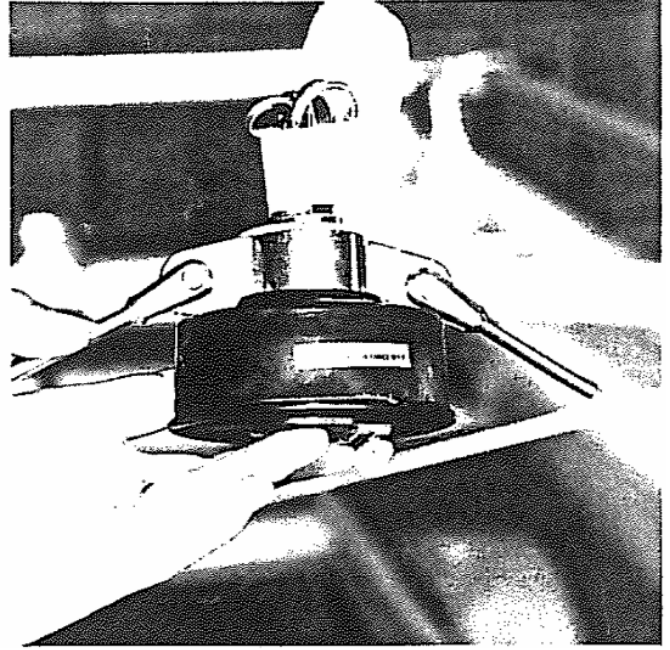
HOBIE 14 Installation Instructions



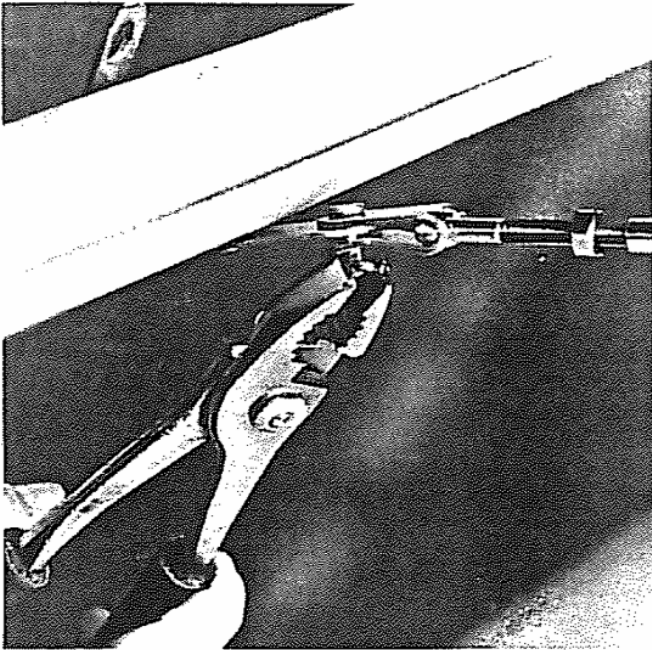
1. Bridle Wires
2. Jib Furling Assembly
3. Shroud Wires
4. Upper Forestay
5. Trapeze Wires
6. Trapeze Adjustment Lines
7. Trapeze Wire Shock Cord
8. Rope Locks
9. Dog Bones
10. Jib Block Support Wire
11. Jib Blocks
12. Jib Sheet
13. Jib Clew Blocks
14. Jib Sail



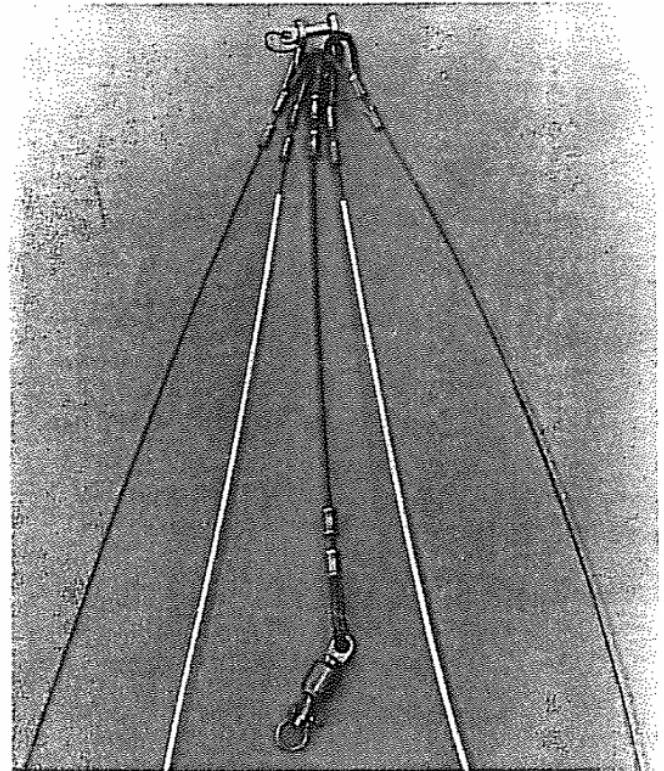
Attach the Bridle Wires to the shackles on the bow tangs.



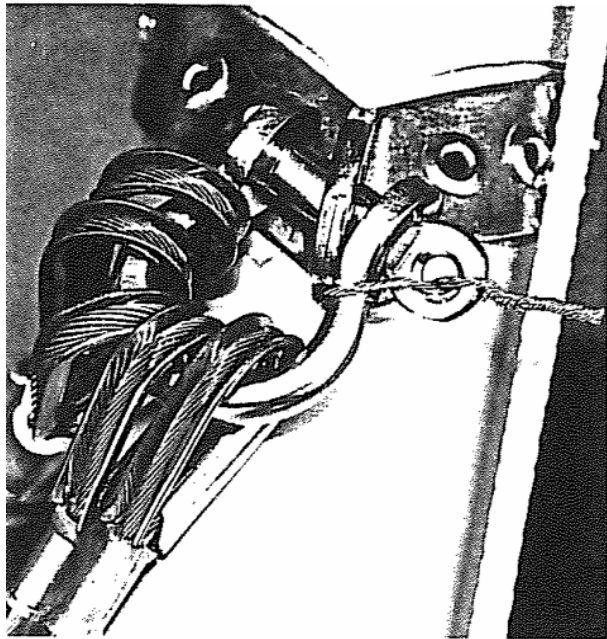
The Jib Furling Assembly is attached to the opposite ends of the bridles with the clevis pins and lock rings provided.



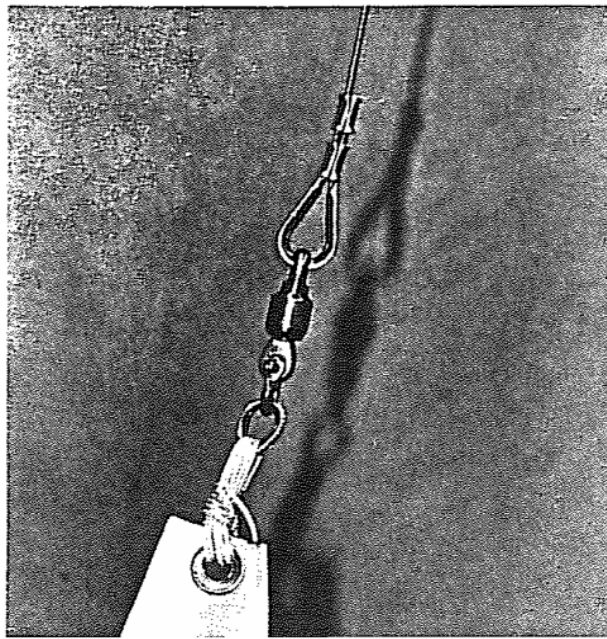
The Jib Block Support Wire is installed beneath the trampoline, attached to each chain plate with a clevis pin and a cotter pin. Use pliers to bend the cotter pins. After the trampoline is installed and laced, adjust the turnbuckle until the wire is tight, but not to the point where it is pulling the sidebars inward. Tighten the turnbuckle lock nuts securely. It is also good practice to safety wire the turnbuckle barrel to prevent it from loosening.



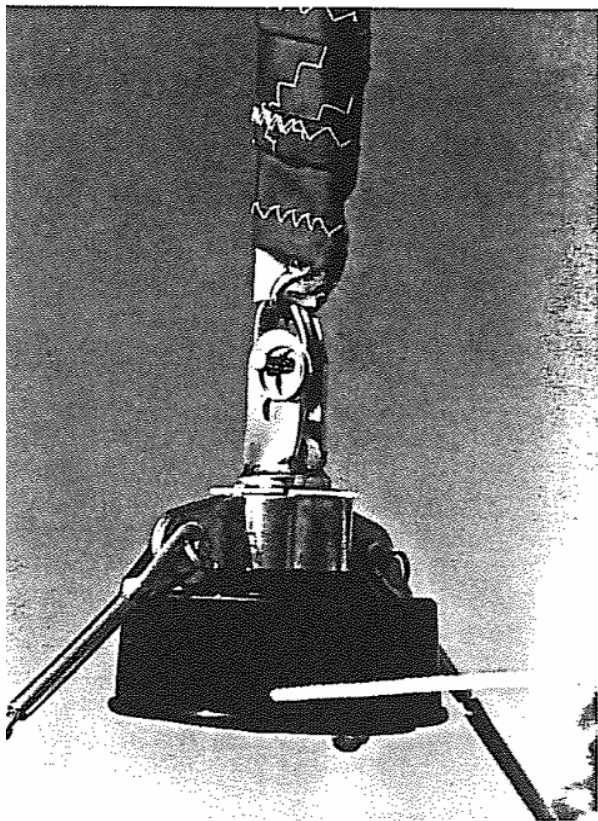
The photo depicts the proper installation of the stays to the mast tang shackle. The short, Upper Forestay with attached swivel goes in the center, the coated Shroud Wires on either side, and the Trapeze Wires outermost.



Attach the shackles to the mast tang, and tighten the pin securely with pliers. Loop the safety wire around the shackle bow. Then pass either end through the hole in the pin in opposite directions and twist the ends together.



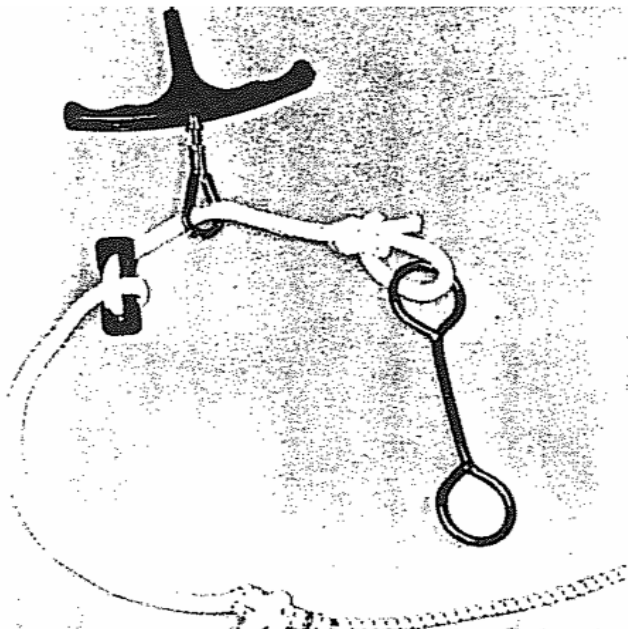
Fasten the head of the jib to the forestay swivel with the shackle provided.



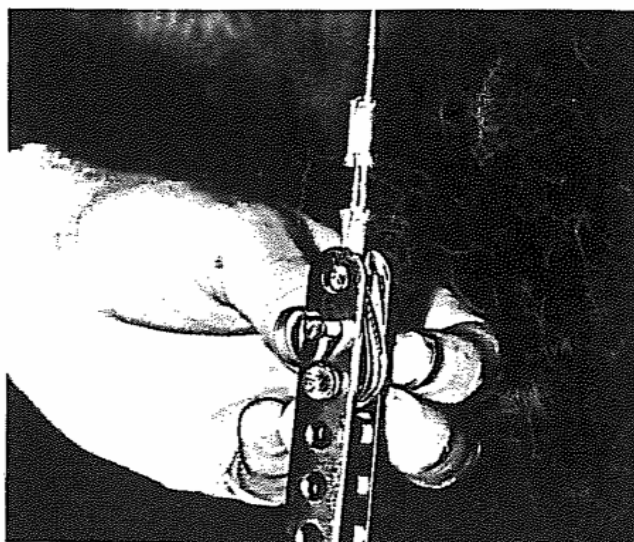
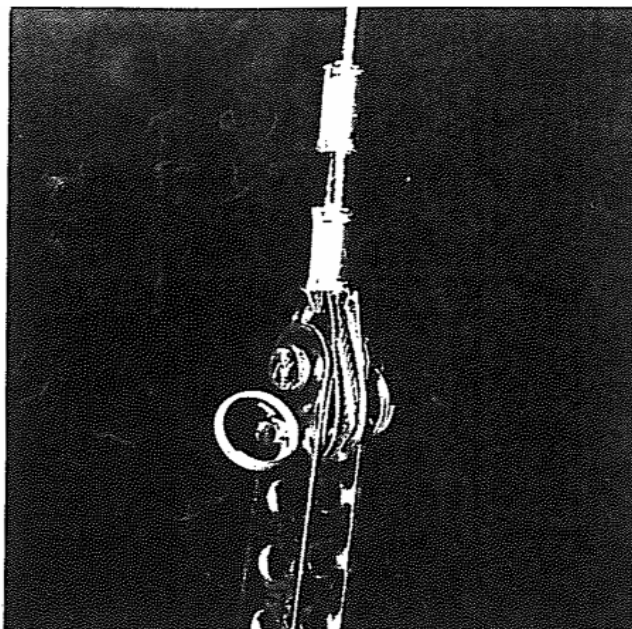
Before stepping the mast, check to see that the thimble at the jib tack will fit into the Jib Furler as shown in the photo. It may be necessary to widen the slot a small amount.

The "TurboTJ" package requires the use of a Teflon disc mast step bearing. Make sure this is in place before stepping the mast.

DANGER: Do not attempt to step the mast in an area where overhead power lines are present. A mast contacting a power line could be fatal! Once it has been determined that the rigging, launching, and sailing areas are free from power line hazards, attach the shrouds to the top holes in the shroud adjusters and raise the mast in the normal fashion. In order to allow the correct sheeting action, the "Turbo TJ" Jib has the integral, fixed length forestay that does not utilize a stay adjuster.

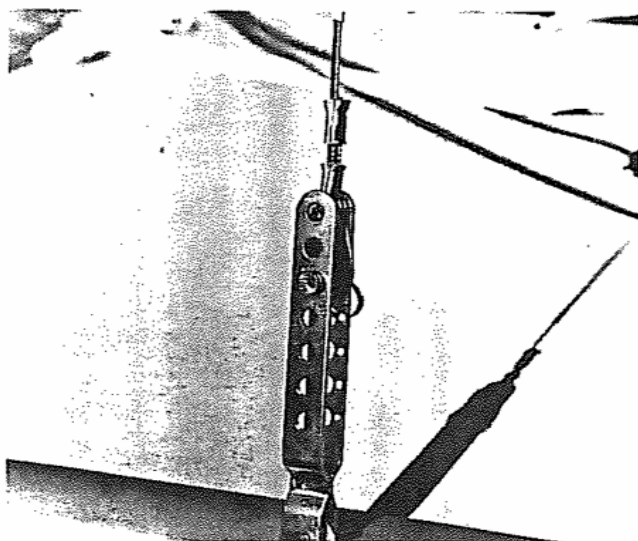


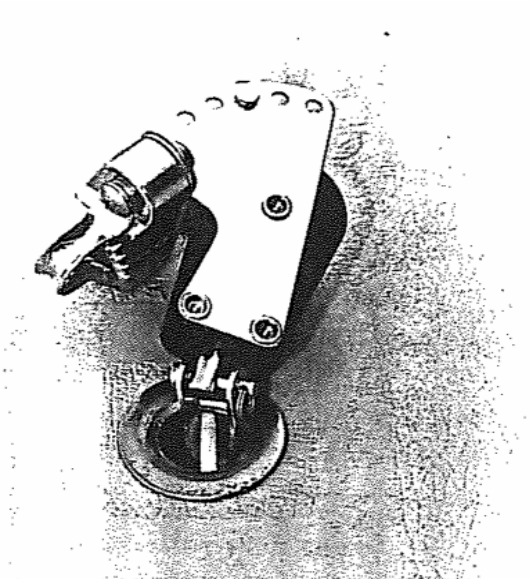
Assemble the Trapeze system components exactly as shown. Make sure the rope lock is installed correctly - between the shock cord and the trapeze wire thimble. Pass the shock cord underneath the trampoline to the opposite side behind the chain plates.



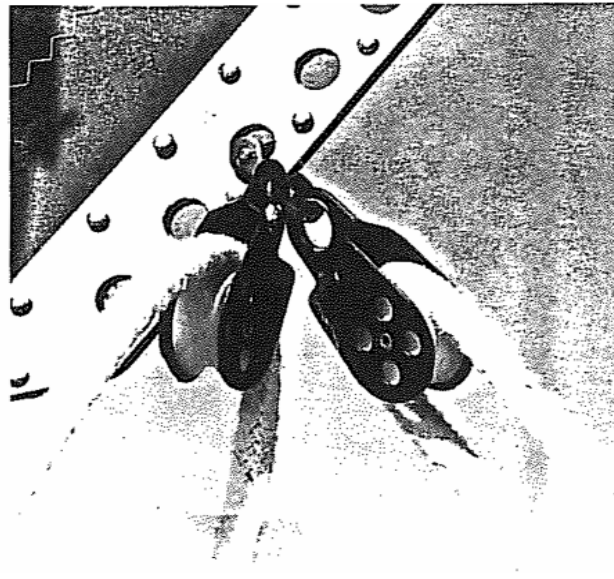
Once the mast has been stepped, it is necessary to tighten the rig by moving the shroud thimbles to a lower hole in the shroud adjusters. Caution: This should be done with extreme care, as a falling mast can inflict severe injuries. Never disconnect and stay unless someone is holding the mast. Please refer to the photos and try it our way first.

The rig can be tightened safely by only one person. Simply pull down on the trapeze handle until there is enough slack in the shroud to insert an extra clevis pin in the next lower hole in the adjuster, capturing the shroud wire thimble. Make sure that the pin is properly secured before removing the first. Repeat this process, alternating port and starboard, until the wires are just snug. Avoid over tightening the stays, as this will prevent correct mast rotation. Ball-lock pins may be used as an aid to stepping and adjusting rig tension, but they should never be used to hold stays while sailing.



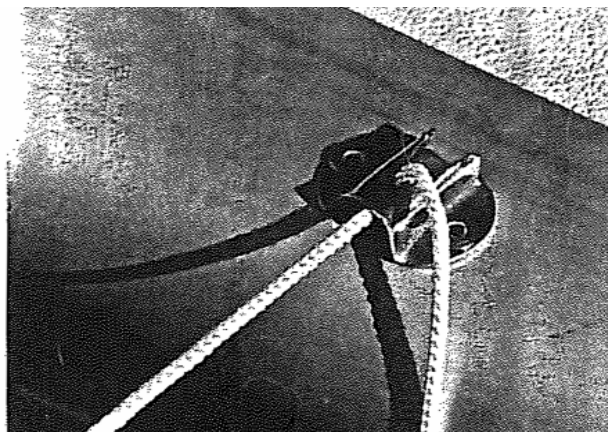
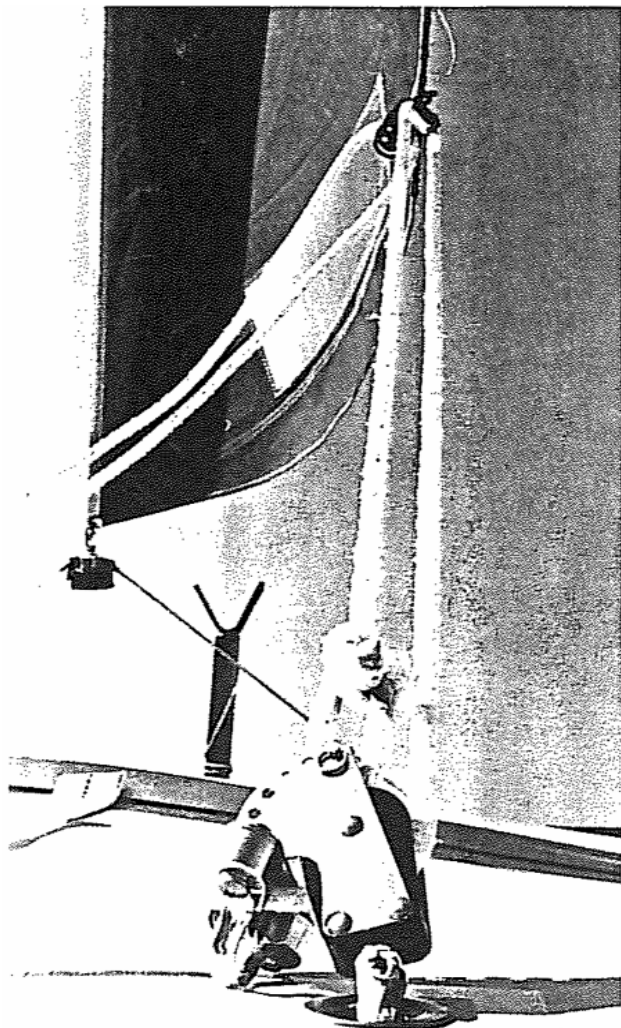


Install the Jib Blocks at the large grommets in the trampoline, capturing the Jib Block Support Wire with the shackle as shown.



Shackle the Jib Clew Blocks to the center hole in the jib clew plates.

Tie the Jib Sheet to the Jib Block with a bowline knot. Run the sheet through the Clew Block, and back down to the Jib Block. Pass the sheet around the Jib Block. Through the cam cleat jaws, and across the trampoline to the other side. It then goes the same as the first side but in the opposite direction, i.e., through the cam cleats, around the Jib Block, up to and around the Clew Block, back down to and tied onto the Jib Block.



Pass the end of the Jib furling line through the V-jam cleat on the front crossbar and tie it to the end of the trampoline hiking strap. Wind the line into the furler drum by rotating the forestay counter clockwise. Keep a slight amount of tension on the line so it will not become fouled around the spool. Stop winding when there is about two feet of slack behind the V-Jam cleat, and unwrap the jib completely while holding the furler stationary.