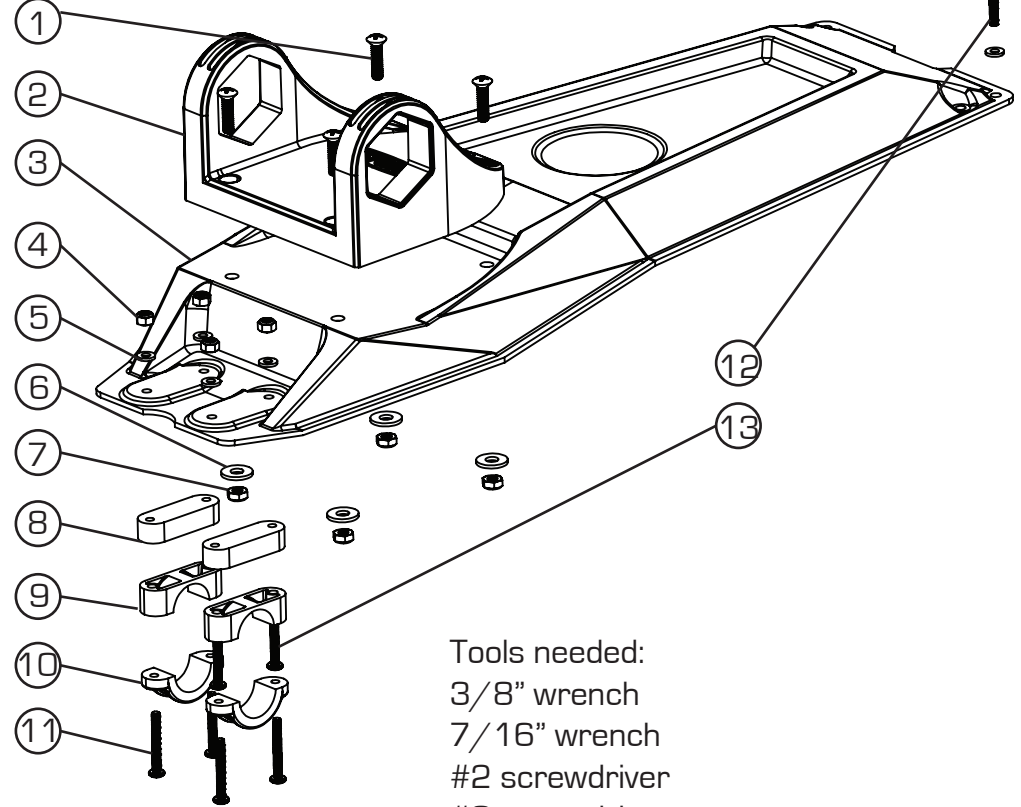


Parts list:

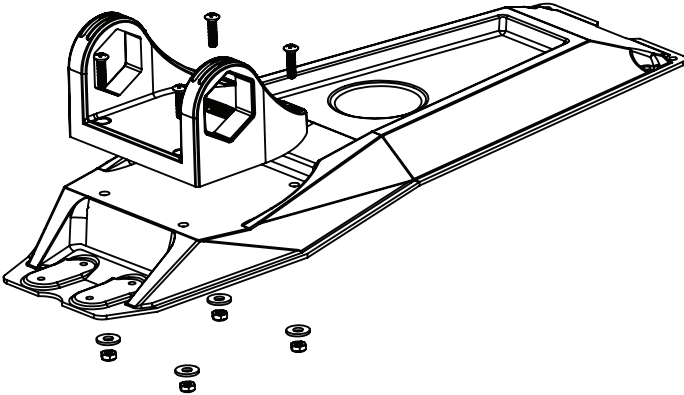
- ① 4X screws 1/4"x1"
- ② Power-Pole base
[not included]
- ③ Hobie Power-Pole mount
- ④ 4X #10-32 nylock nuts
- ⑤ 6X #10 washers
- ⑥ 4X washers 1/4"
- ⑦ 4X 1/4-20 nuts
- ⑧ Pro Angler 12 shims
- ⑨ Clamp bottom bracket
- ⑩ Clamp top bracket
- ⑪ 4X screws #10-32x1-3/4"
- ⑫ 2X screws #10-32x3/4"
- ⑬ 4X screws #10-32x2"(Pro Angler 12 only)

Pro Angler Power-Pole Mount Instructions

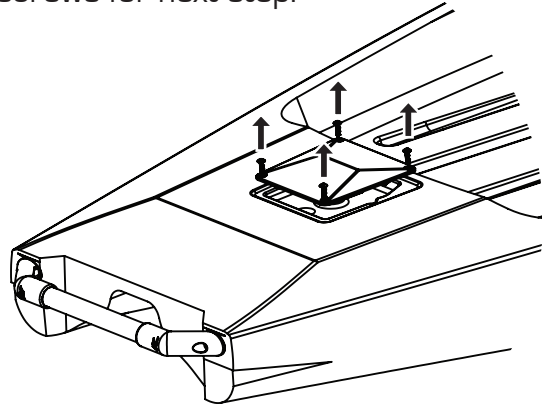


Tools needed:
3/8" wrench
7/16" wrench
#2 screwdriver
#3 screwdriver

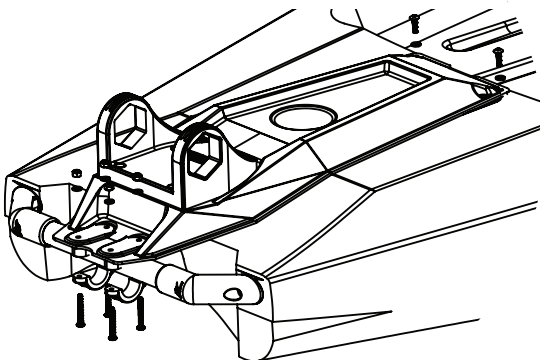
- ① Assemble Power-Pole base to Hobie Power-Pole mount using 1/4" screws, washers & nuts.



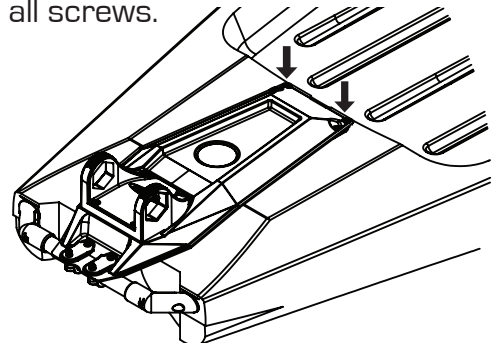
- ② Remove screws & rudder cover. Save screws for next step.



- ③ Align the clamps around the rear handle & install the 10-32 screws, washers & nuts. Add shims & longer screws for PA12. **Do not tighten.**



- ④ Using the #10 washers and the #10-32X3/4 screws from the rudder cover fasten the front of the mount. Tighten all screws.



Hobie

PN 72020176 REV 141124