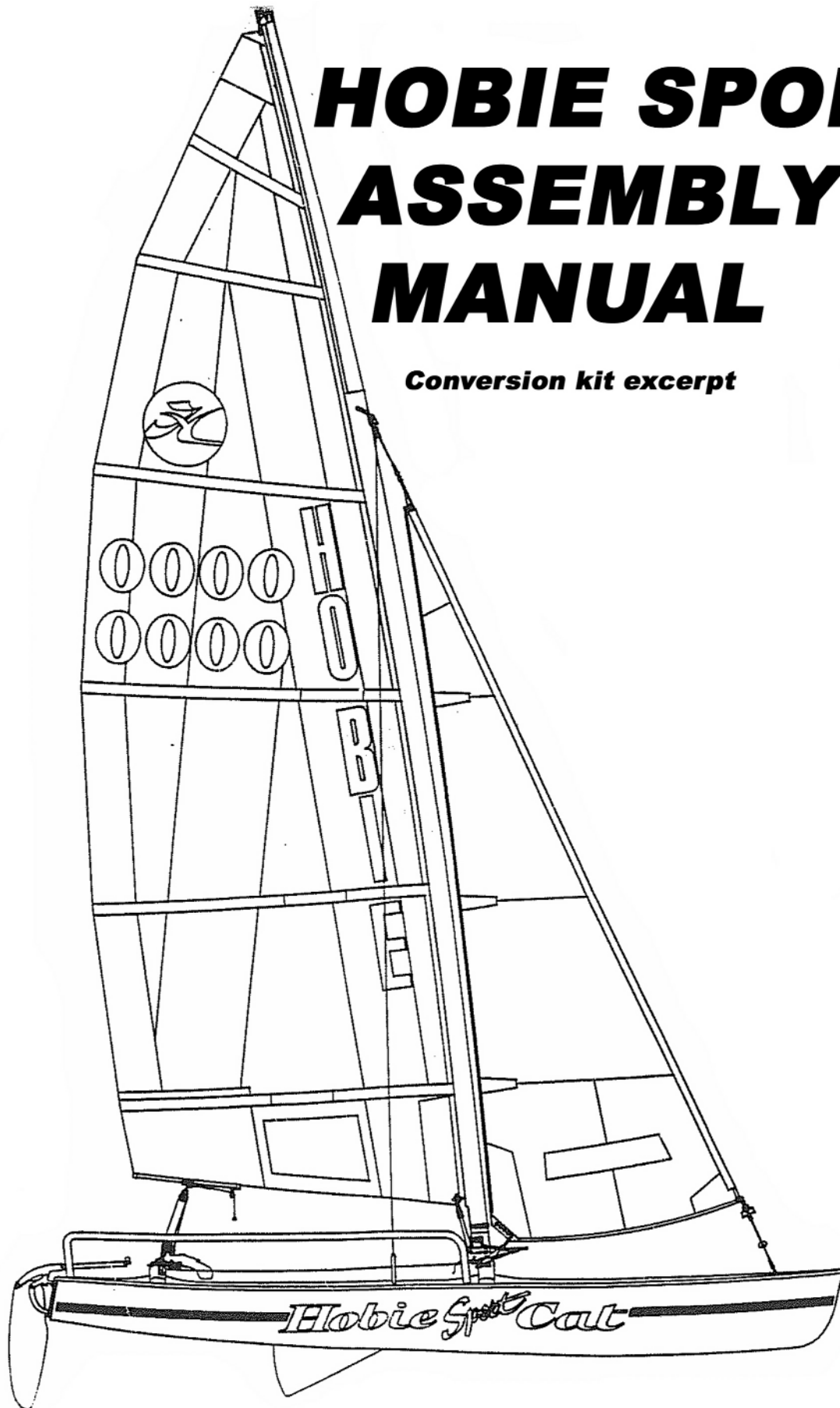
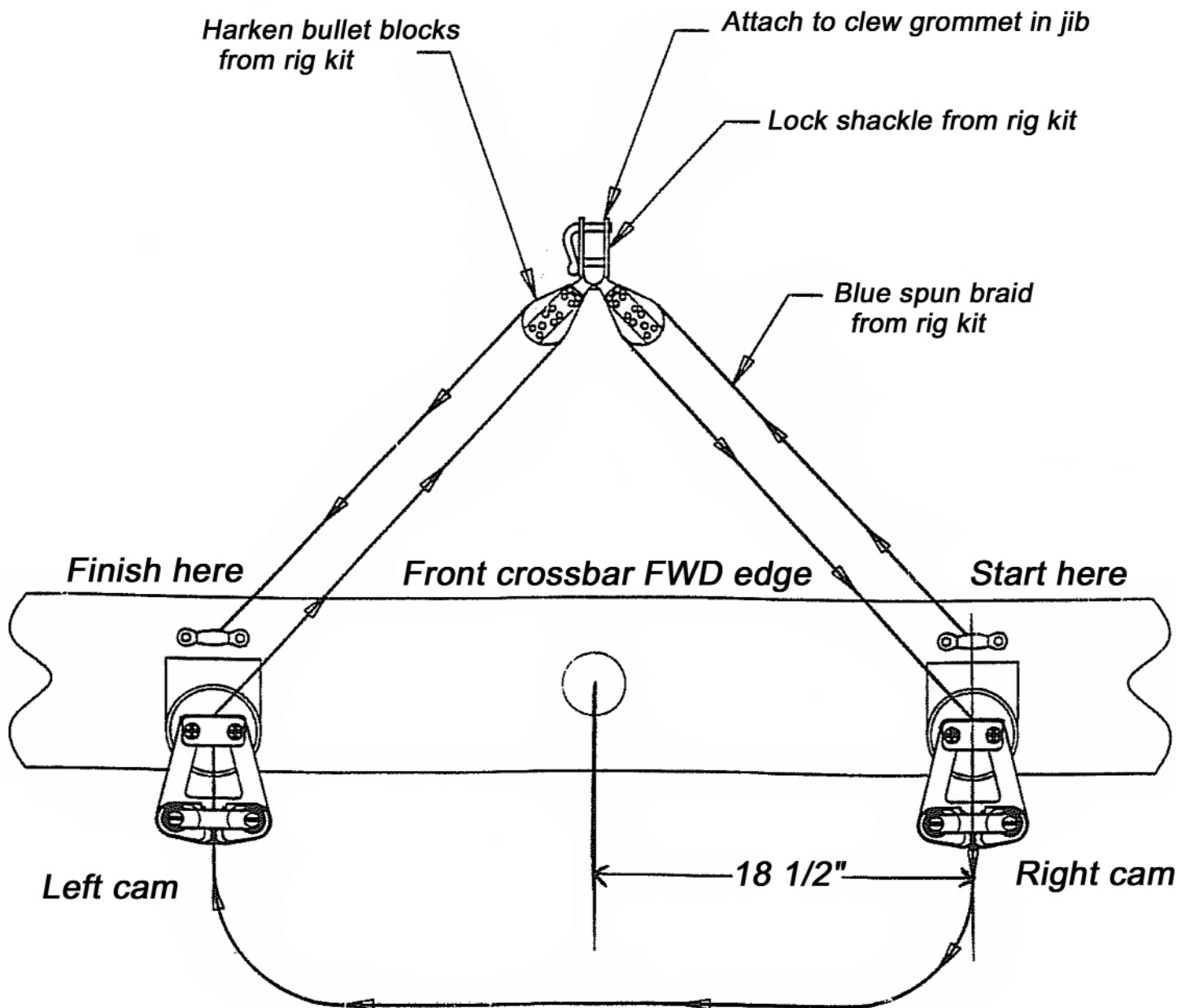


# **HOBIE SPORT ASSEMBLY MANUAL**

**Conversion kit excerpt**

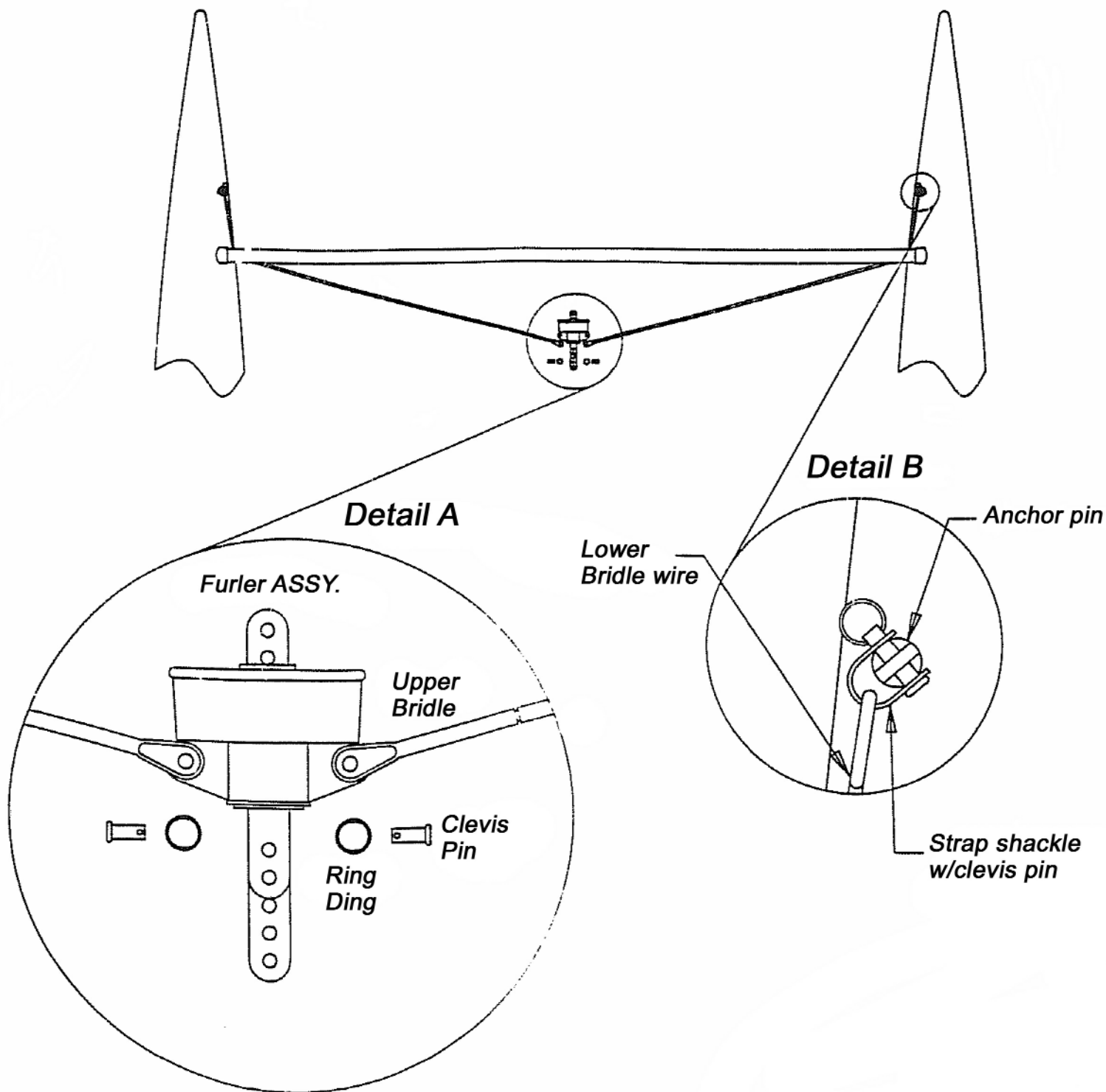


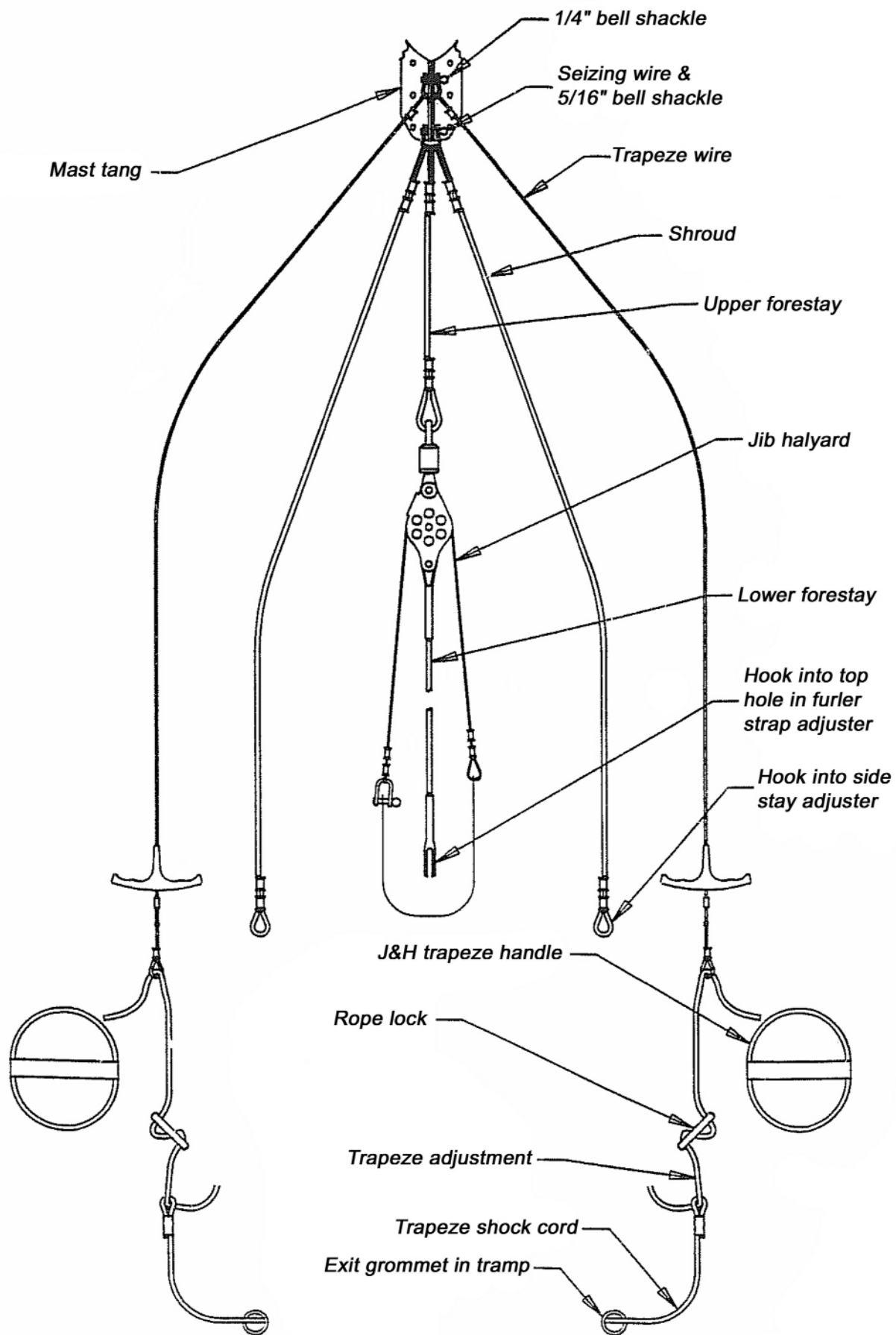
Rigging the jib sheet.



\* Lance cleat is mounted on the centerline and 4 1/2" from the dolphin striker post.

Spreader bar installation.

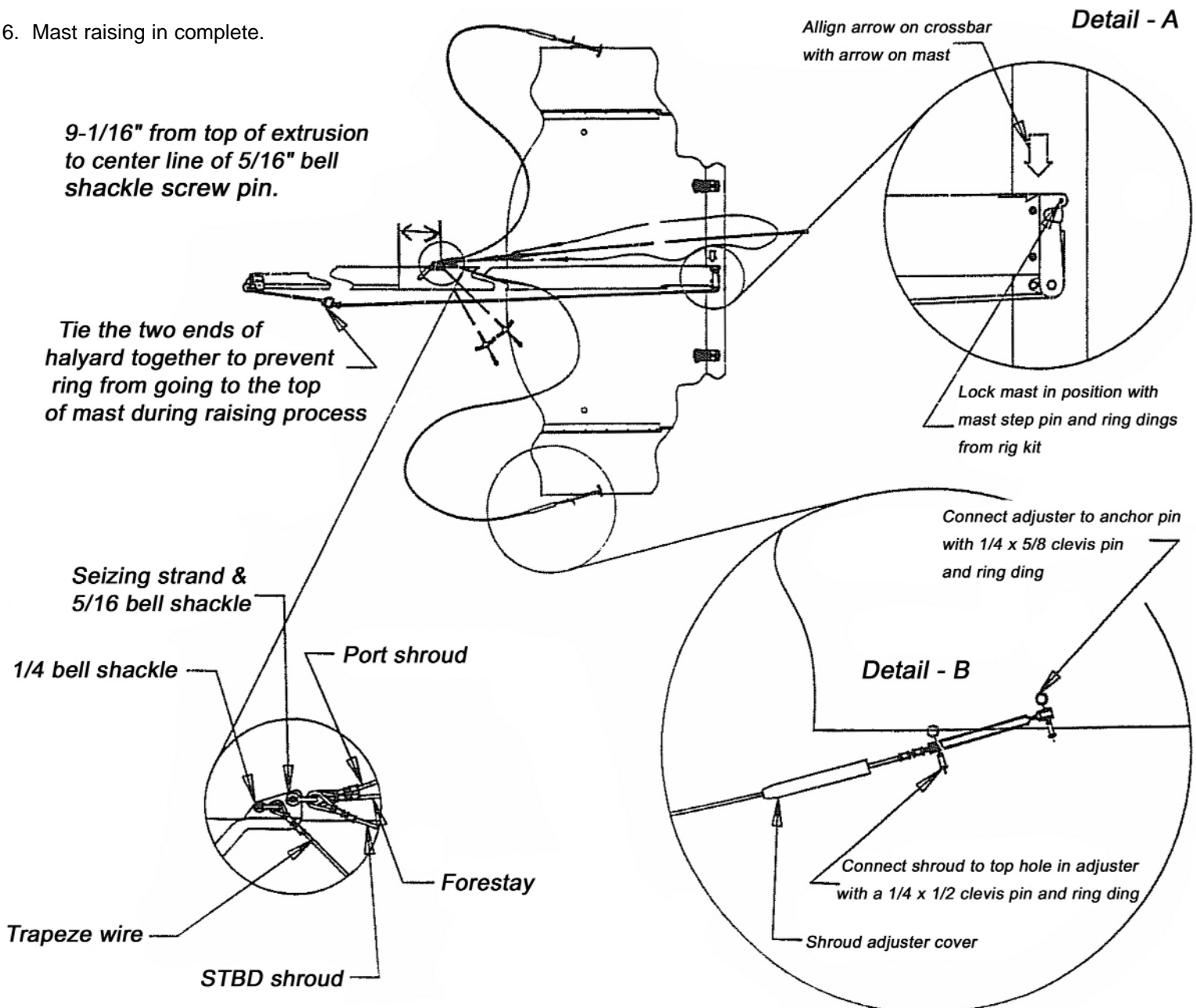




Installing and raising you mast.

Warning: Before starting this section be sure the area where you are working is clear of power lines, contact of a mast with power lines could be fatal.

1. Place the mast on the boat with the tip of the mast supported.  
Note - support should give clearance from the tiller crossbar.
2. Attach mast to crossbar with mast step pin and ring dings from the rig kit as shown in detail -A.
3. Connect the shrouds to the stay adjusters as shown in detail -B.
4. Secure main halyard by tying the two ends together, this will prevent the mast raising ring from going to the top of the mast in the raising process.
5. If arrows are aligned at the base of the mast, and shrouds are tangle free you are ready to raise the mast. Using the AFT crossbar for support, slowly raise the mast to chest level, once in this position attach the lower forestay to the top hole in the furler adjuster on the spreader pole with the clevis pin and ring ding on the adjuster.
6. Mast raising in complete.



## Tightening the rig.

The following specs for tightening the rig are recommended by the factory. Individual preference may vary.

1. While your partner is supporting the mast, unpin the forestay and reset to specs in diagram -A.
2. Once forestay is pinned at the proper setting, use the trapeze as a lever to get slack on the shroud and reset to diagram -B.
3. Repeat for the other shroud.

